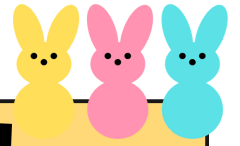


SECOND GRADE NEWSLETTER

APRIL 2026



REMINDERS

Dismissal: Dismissal is every day at 2:10 pm. Please ensure that whoever is picking up is on your child's Blue Card.

Folders: Please make sure you are checking your child's home folder every night. Important notices will be sent home in this folder. This folder must come back to school every day.

Homework: Please make sure you are checking their Math Workbook, Reading Response Packet, and Reading Log. Homework must be completed every night and is checked daily.

iReady: Please be sure to complete and pass 2 reading and 2 math lessons every week.

March/April Bucket Fillers:

- 201: Adam Moustouli and Sardor Nabiyev
- 202: Jasmine Jiang and Asher Syed
- 203: Lilianna Zheng, Jonathan Garcia, Esperanza Alonso, and Jasper Wu
- 204: Salikh Sattorov and Amelia Yianh

Upcoming Dates:

- 04/02-04/10: Spring Break, school will be closed
- 04/13-04/17: Book Fair
- 04/15: Report Cards are sent home
- 04/16: Parent Teacher Conferences / Half a Day
- 04/20-04/24: Spring Spirit Week
- 04/23: Family Night "LAST ONE!"

201

Ms. Sciortino
ssciortino2@schools.nyc.gov

202

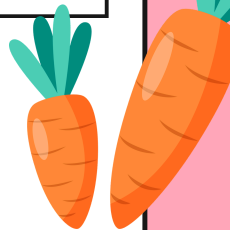
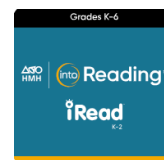
Mrs. Villasis
lvillasis@schools.nyc.gov

203

Ms. Guevara
tguevara4@schools.nyc.gov

204

Ms. Vega and Ms. DiClementi
avega40@schools.nyc.gov
ediclementi@schools.nyc.gov



ASSESSMENTS

HMH Module 6 Weekly Assessment
HMH Module 6 Selection Quiz
Math Topic 9 Assessment
Foundations Assessment: Unit 10

AT A GLANCE

Module 6 - Weather Wise
Essential Question: How does weather affect us?





WHAT WE ARE LEARNING

Reading, Writing, Math, Science

READING:

In Reading this month, students will learn how weather changes from day to day and from season to season. Through texts and collaborative work, children will explore types of weather they may experience quite often, or may never experience—such as blizzards or hurricanes. Students will also learn to notice how the weather affects them and their communities.

WRITING:

In Writing this month, students will write a poem about their favorite food. They will think about their favorite food and what makes them love it. Students will also be able to organize and focus on the topic and purpose of their poem.

MATH:

In Math this month, students will focus understanding and expanding addition to 3-digit numbers using models and strategies. Students explain why addition strategies work using place value and properties of operations.

SCIENCE:

In Science this month, students will be introduced to maps as useful records of large changes to landforms. Students will discuss features of maps and explore different views of landforms (a bird's-eye view and a side view). They then use the unit's modeling tool to create their own maps of landforms.